

**FOR SALE**

**PRICE REDUCED – OFFERS OVER £50,000**

**RETAIL PREMISES**

**PROMINENT HIGH STREET  
LOCATION**

**SUITABLE FOR A VARIETY  
OF USES**

**ON-STREET PARKING**

**100% RATES RELIEF**

**NIA: 37.07 SQ M. (399 SQ FT.)**

**OFFERS OVER £50,000**



VIDEO TOUR



WHAT 3 WORDS

**144 HIGH STREET, MONTROSE, DD10 8JB**

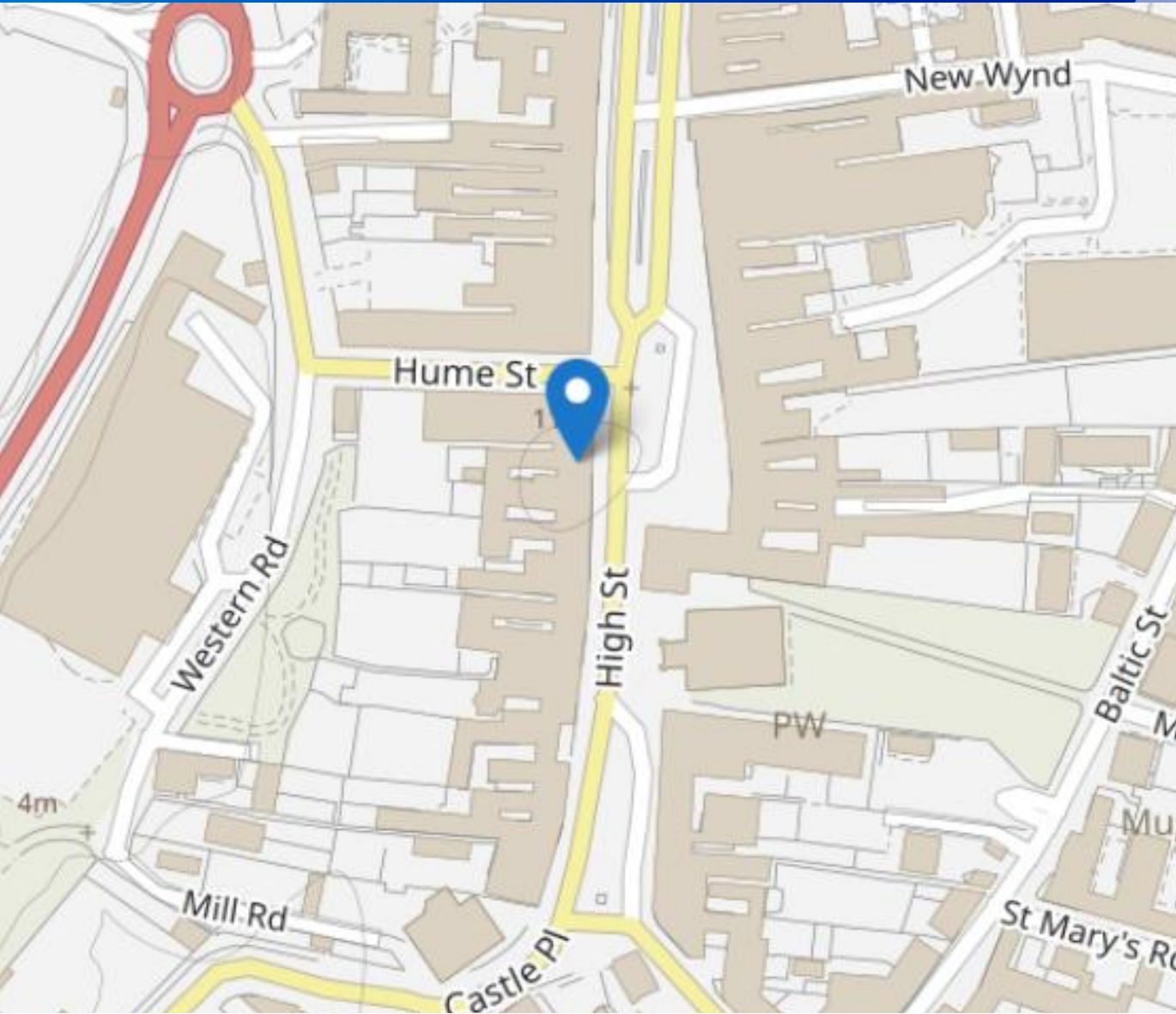
**CONTACT: Scott Robertson** s.robertson@shepherd.co.uk | 01382 878005 |  
**Jamie Hutcheon** jamie.hutcheon@shepherd.co.uk | 01382 878005 | [shepherd.co.uk](http://shepherd.co.uk)





# Location

144 HIGH STREET, MONTROSE, DD10 8JB



## LOCATION

Montrose is located on the North-East Coast of Angus and is an important service and employment centre for North Angus and the southern parts of Aberdeenshire.

Montrose is well located with Aberdeen 35 miles to the north, Dundee 30 miles to the south and Forfar 17 miles to the east.

The town sits on the A92 coastal route with links to the A90 trunk road network and is served by the East Coast Railway Line which runs rail services into London (Kings Cross).

The town has a population of circa 13,250 (Source: Angus Council) and as well as being an attractive place to live Montrose is also a popular destination for tourists.

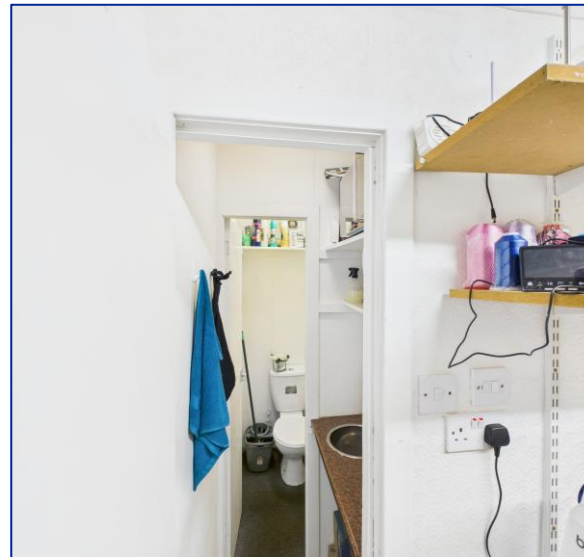


FIND ON GOOGLE MAPS



# Description

144 HIGH STREET, MONTROSE, DD10 8JB



## DESCRIPTION

The subject comprises a modern retail unit located at the southern extent of Montrose high street, a prime retail pitch in the town centre.

Internally, the property offers an open plan retail area, storage/office space, and WC.

The unit benefits from a modern and attractive display frontage onto the High Street.

On street parking is available to the front of the subjects together with a number of public car parks in the vicinity.

## ACCOMODATION

	m <sup>2</sup>	ft <sup>2</sup>
Ground Floor	37.07	399
<b>Total</b>	<b>37.07</b>	<b>399</b>

The above floor areas have been calculated on a Net Internal Floor Area basis in accordance with the RICS Code of Measuring Practice (6th Edition).



## PRICE

Our client is inviting offers in excess of £50,000 for their heritable interest.

## RATEABLE VALUE

The subjects have been assessed for rating purposes and have been entered in the valuation roll at:

Rateable Value: £4,550.

Draft 2026 Rateable Value: £4,950

The Unified Business Rate for 2025/2026 is 49.8p exclusive of water and sewerage.

The subjects qualify for 100% rates relief under the Small Business Bonus Scheme.

## ENERGY PERFORMANCE CERTIFICATE

Available upon request.

## VAT

All figures are quoted exclusive of VAT (if applicable).

## LEGAL COSTS

Each party to bear their own legal costs in connection with this transaction.



## Get in Touch

For further information or viewing arrangements please contact the sole agents:



**Scott Robertson**

[s.robertson@shepherd.co.uk](mailto:s.robertson@shepherd.co.uk)



**Jamie Hutcheon**

[jamie.hutcheon@shepherd.co.uk](mailto:jamie.hutcheon@shepherd.co.uk)

**Shepherd Chartered Surveyors**

13 Albert Square, Dundee, DD1 1XA

t: 01382 878005



## ANTI MONEY LAUNDERING REGULATIONS

The Money Laundering, Terrorist Financing and Transfer of Funds (Information on the Payer) Regulations 2017 came into force on the 26th June 2017. This now requires us to conduct due diligence not only on our client but also on any purchasers or occupiers. Once an offer has been accepted, the prospective purchaser(s)/occupier(s) will need to provide, as a minimum, proof of identity and residence and proof of funds for the purchase, before the transaction can proceed.

[shepherd.co.uk](http://shepherd.co.uk)